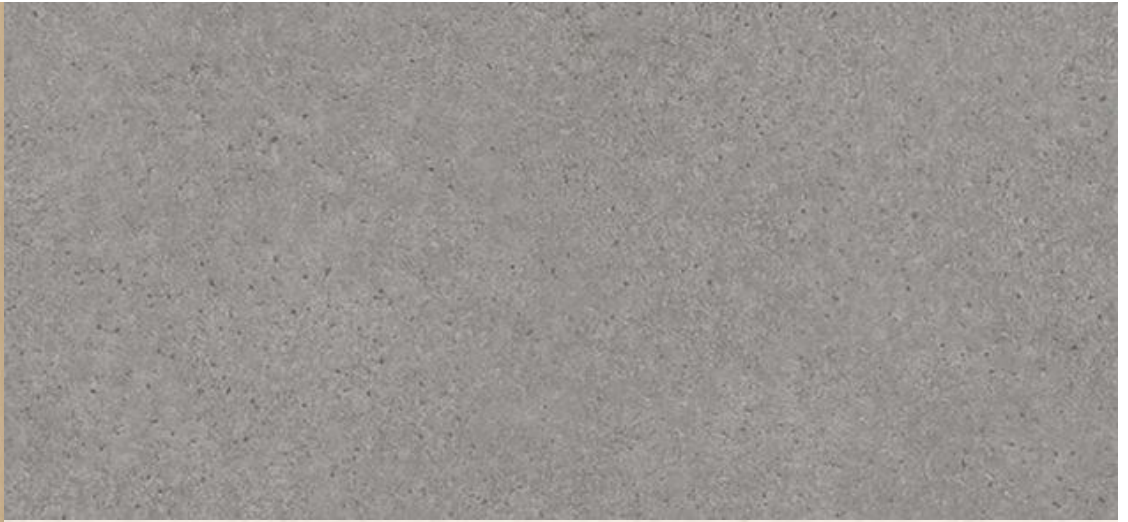




PT. TECHNO WOOD INDONESIA

AICA

KOYO JAPAN GROUP COMPANY



DECORPOLY

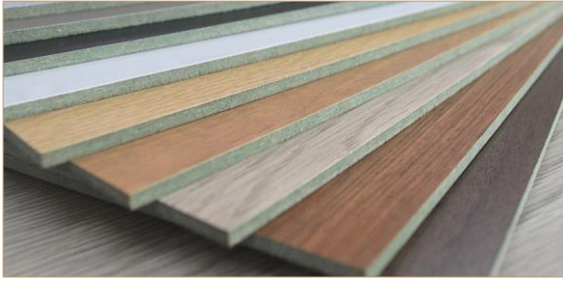
Decorative Polyester

DECORPOST

Decorative Postforming

DECORPOLY

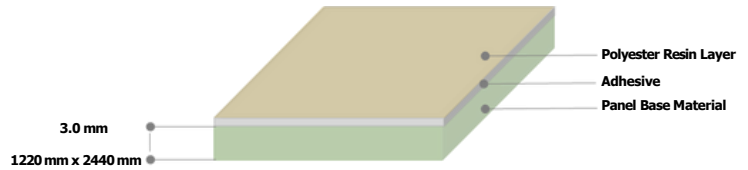
Decorative Polyester HMR



Decorpoly is commonly referred to as "**poly board**" or simply "**poly**". The base panel for Decorpoly is **HMR (High Moisture Resistant)**, MDF (Medium Density Fiberboard), and could be customized using Plywood.

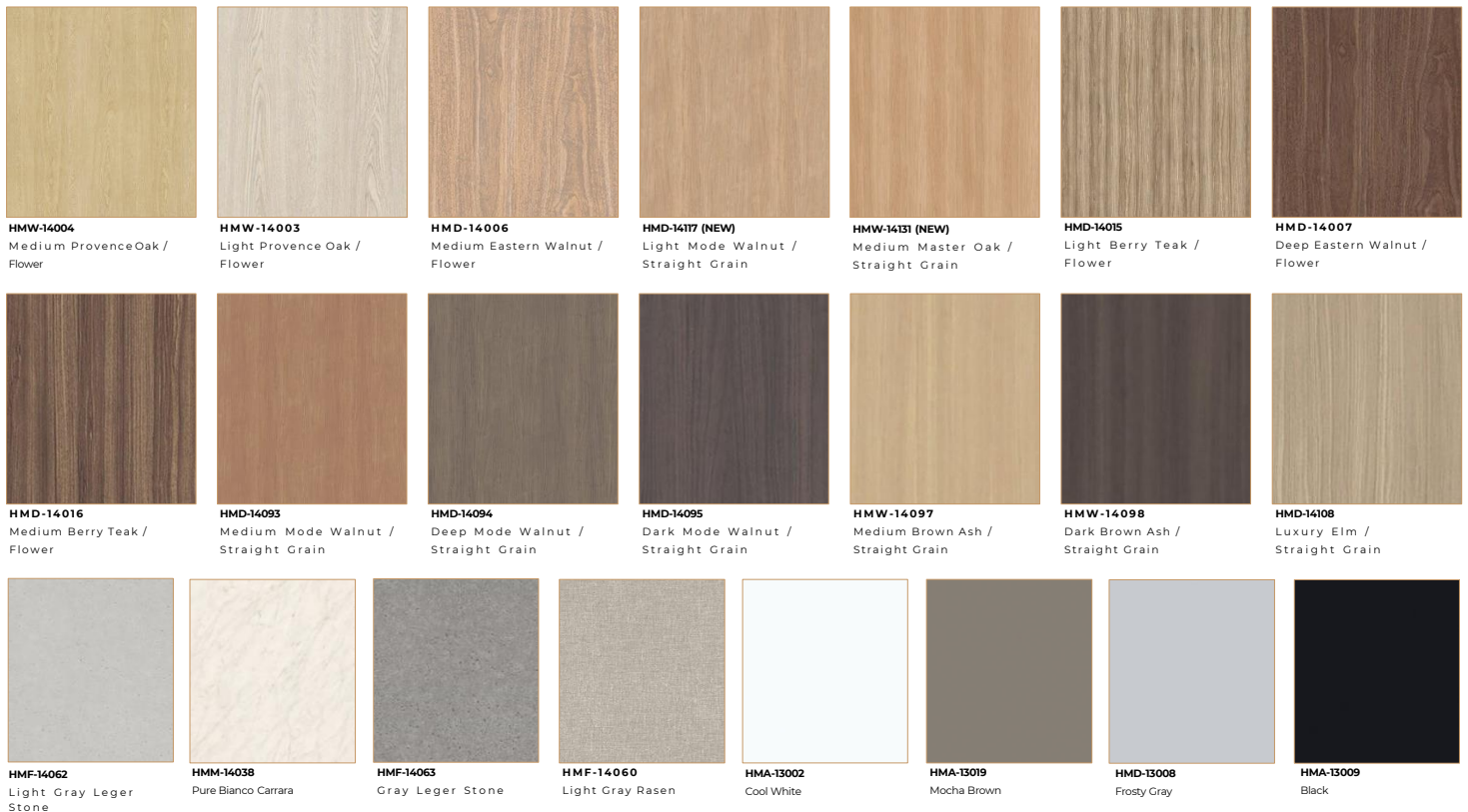
Decorpoly is made of **decorative paper sheet** and coated by **polyester resin** on a base panel.

Also, Decorpoly uses a frame film to print the **surface type**.



Exclusive 22 AICA Patterns
6 Surface Texture Options
Thickness = 3 mm
Size = 4'x8' (1220 x 2440 mm)

Japan Quality
Resistant to High Humidity
Easy to install. Easy to clean
Great for Inner and Body Furniture



How to read the code:

Example: "**HMM-14038**"

HM = Base Panel HMR (High Moisture Resistance)

M = Glossy Finish Surface

14038 = Pattern Code for Pure Bianco Carrara

Decorpoly has 6 texture finishes:

A = Hard Orange Peel

W = Distant Wood Motif Style

D = Tight Wood Motif Style

T = Matt

F = Soft Orange Peel

M = Glossy

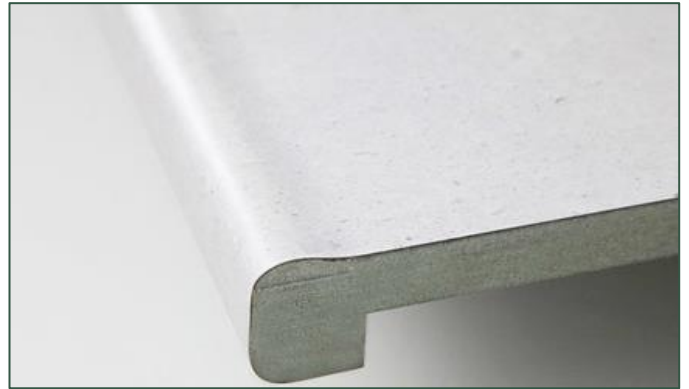
Decorpoly does not have surfaces that are as strong as that of high-pressure laminates, but it does offer excellent cost performance

DECORPOST

Decorative Postforming

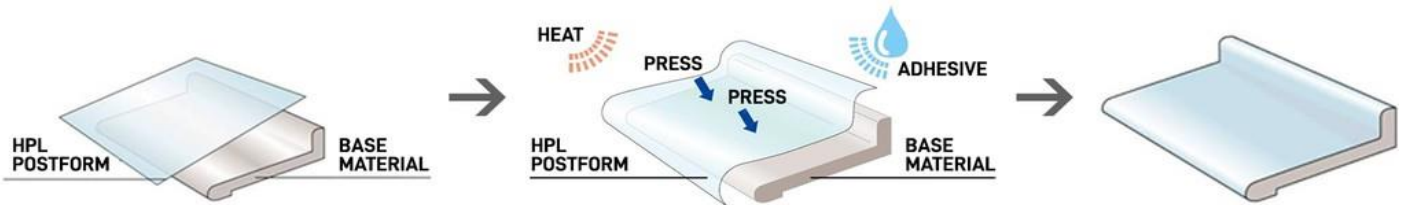
Decorpost or **Decorative Postforming** is a product that is referred to "post-forming board".

It consists of an **HPL Postform** which is glued onto the surface of the base panel (HMR) and then **uses a post-forming machine** to **bend the HPL** to the desired bend.



- Exclusive AICA Patterns •
- Japan Postforming Technology •
- Cheaper than Marble & Solid Surface •
- Beautiful Profile Shapes •
- Great for Top Table & Door Panel •

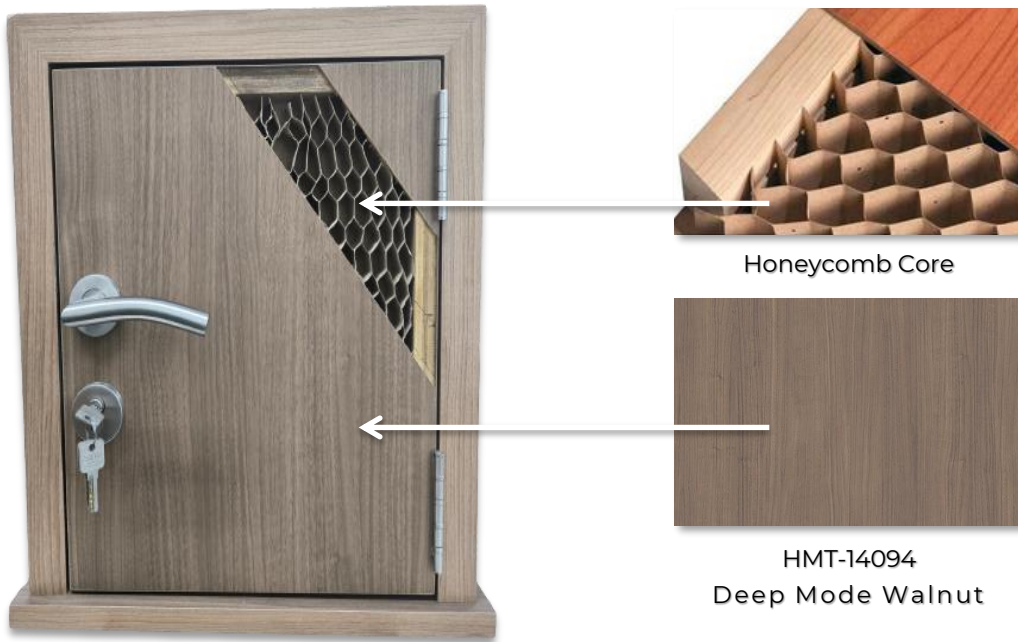
Thickness 18 mm & 24 mm | Base Panel HMR | Customized up to 1100 mm x 3000 mm



Post forming is a processing technology that applies heat and high pressure to Techno Wood Postform, applies adhesive to a base material, and molds along the base material. Post-formed counters take advantage of the excellent physical properties of HPL.

CH (R-18) 	CDQ-8 (R-8) 	CDQ-4 (R-4) 	CS45 (R-10)
CS30 (R-10) 	CSR45 (R-10) 	CSR30 (R-10) 	DR18 (R-5)
DH18 (R-9) 	DH24 (R-12) 	DSL24 (R-8) 	DQ18-8 (R-8)
DQ18-4 (R-4) 	CWD (R-8) 	CBS (R-9) 	CA (R-8)

Decorpost is a great choice for creating projects with curved, circular or contoured surfaces such as top tables, counters, door panels, and more.



** Sample of Flush Door. With Honeycomb Core material + Decorpoly*

Decorative Postforming

DECORPOST



** The Kitchen's Top Table is using DECORPOST CWD type & Finish HPL ASU-14144-DG (Pale Aurora Marble)*

PT. Techno Wood Indonesia

Head Office & Factory

Kawasan Industri Indotaisei,
Sector 1 A Block K5A/5B Cikampek, Karawang
0264-350151, 0264-350154
info@technowood.co.id / fauzan_marketing@technowood.co.id
www.technowoodindonesia.com

